



ISO9001:2015 certified

Series 700 Screening Bucket



Owner's Manual

Our Tradition is Quality Driven and Field Proven

Manual # - MAN-VBS-700-003

Table of Contents

Warning	3
Safety Rules	3
To the Owner	4
Warranty Policy	4
Setup and Operation	5
Lubrication and Maintenance	6
Case Drain Instruction	7
Changing Screens	10
Recommended Torque Specifications	11
Troubleshooting	12
Registration Form	13

***PART DIAGRAMS**

Scan the QR Code or visit our website to view our parts book:

<https://www.remtingermfg.com/agricultural-products/downloads/>





Warning



Before using this equipment, make certain that every operator:

- Is instructed in safe and proper use of this equipment.
- Reads and understands the manual pertaining to the equipment.
- Reads and understands ALL (if applicable) Safety Decals on the equipment.
- Clears the area of all other people before operating the equipment.
- Learns and practices safe use of the equipment in a safe clear open area.



This symbol indicates an important Safety Alert Message in this Manual. Carefully read and understand the message that follows. The potential for series injury or death is possible.



Safety Rules



- Never attempt to operate or adjust the equipment without reading this manual.
- Do not attempt to adjust the equipment while it is in motion.
- Caution is required when hooking up or un-hooking the equipment.
- Always use any transport locks that are provided on the equipment.
- Always place all safety decals and reflectors in their proper locations. Clean and replace as necessary.
- Never allow anyone to ride on the equipment.
- Always slow down when turning and traveling over rough terrain.
- Always support the equipment when mounting or working on the equipment.
- Before using the equipment, inspect hydraulic hoses and all fasteners for tightness. Also, check your skid steer lift mechanisms are in good working order.
- Hydraulic oil at normal working pressure can penetrate the skin causing serious personal injury.
- Do not use your fingers or hands to check a hydraulic leak. Use a piece of cardboard or wood to search for suspected leaks. If injured by escaping hydraulic oil, seek medical help immediately. Serious infection or reaction can develop if proper medical treatment is not administered immediately.
- The operator is responsible for the safety of themselves and others when operating equipment.
- Always lower screening bucket to the ground when servicing.
- Stop the loader and remove keys before connecting or disconnecting hydraulic hoses. Before disconnecting hoses operate the controls to release any pressure in the system.



Heavy loads can make your equipment unstable. Keep the load close to the ground and move slowly. Add counter weights if load is unbalanced.

To the Owner

Your new equipment was carefully designed to give years of dependable service. This manual contains important information about the safe assembly, adjustment, operation, and maintenance of your equipment. To keep it operating efficiently, read the instructions in this manual. This manual should be considered a permanent part of your implement and should remain with the implement when it is sold. Additional diagrams may also be included for specific applications. Please contact the dealer or Remlinger Manufacturing for any questions at **1-800-537-7370**.

Any unauthorized modification to any part of the equipment could cause serious injury and void any warranty consideration. Please refer to the Warranty Policy referenced below. For additional manuals or to replace a lost or damaged manual, please contact your dealer. The manual number is referenced on the lower right-hand corner of each page.

Warranty Policy

Remlinger Mfg. will warrant all products against defects in material and workmanship manufactured and sold by it. Warranty will only be granted after examination by appropriate personnel. This warranty is expressly limited to the replacement of defective products. This warranty does not obligate Remlinger Manufacturing to cover cost of labor to replace these parts.

Remlinger Mfg. reserves the right to change specifications, add improvements or discontinue manufacture of any of its equipment without notice or obligation to purchasers of its equipment. This warranty gives you specific legal rights. You may also have other rights which vary according to state or province.

WARRANTY EXCLUSIONS: Labor, transportation, or any cost related to a service call is not provided by Remlinger Mfg. This Limited Warranty does not apply to damage resulting from misuse, neglect, normal wear, accident or improper installation or maintenance.

BASIC WARRANTY: All Remlinger manufactured products are warranted for one year from date of purchase.

WARRANTY CERTIFICATION: Warranty registration should be mailed, emailed or faxed within 30 days of purchase. Please see Registration Form on Page 13.

UNAPPROVED PARTS OR MODIFICATION: All obligations of Remlinger Mfg. under this Warranty are terminated if unapproved parts are used or if equipment is modified or altered in any way not approved by Remlinger Mfg.

Setup and Operation

The Series 700 Screening Bucket comes completely assembled with the hose end connectors needed to connect to the skid loader.

The hoses that connect to the skid loader are easily identifiable. The smaller flat face coupler attaches to mating end on skid steer. The larger flat face coupler attaches to mating end on skid steer. **The case drain hose and ends need to be attached. Warranty is voided if this is not used.** If your skid steer does not have a case drain, see instructions on page 7.

The hydraulic system on the Series 700 Screening Bucket motor is one-directional. The hydraulic system of the vibrator includes a cross port check valve in the motor or built into the flow control valve. This check valve allows the motor to stop gradually when the skid loader hydraulics are turned off. It will allow the motor to run if the hoses are connected either way. We have found that the easiest method to determine the proper hose connections is to put the two connectors on the hoses and connect them to the skid loader. Adjust the lever on the flow divider to a setting of 5.

Once you have correctly connected the hydraulic hoses to the vibrator you can adjust the flow divider to get the best screening action.

Setting 5 to 6 is normally the best setting to run the vibrator. We recommend that you do not adjust the flow below setting 4.

Run your skid loader at its normal RPM to produce its rated hydraulic flow. If your skid loader has no tachometer try to use the same throttle setting each time you use the bucket.

WARNING!

The screening bucket's hydraulic components are designed for a maximum flow rate of 16 GPM. If your skid loader is capable of flow rate of over 16 GPM you can reduce the flow by adjusting the engine RPM. If your skid loader is equipped with a high-flow pump use only the low-flow setting.

**Max load for this product is
1200 lbs capacity!**

Lubrication and Maintenance

Lubricate with multipurpose lubricant or an equivalent SAE multipurpose type grease at hourly intervals indicated by the symbols.



Do not clean, lubricate, or adjust your machine while it is in motion.

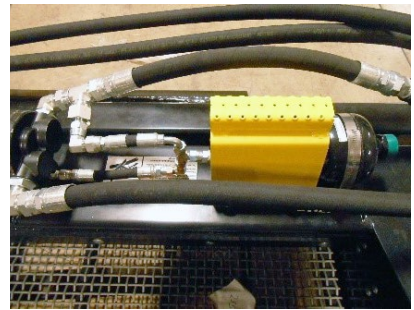
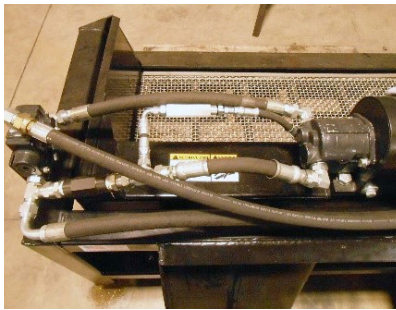
Clean grease fittings before using grease gun. Replace any lost or broken fittings immediately. The application of grease in bearing area is very critical. Grease motor shaft bearings every 20-25 hours.
DO NOT OVER GREASE.



Case Drain Instruction

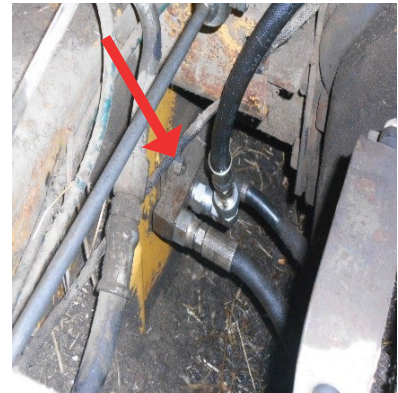
Remlinger Mfg. has come out with a “How to Instruction” for a Case Drain Line to incorporate onto older model skid steers. Some older model skid steers are not equipped with an optional port to divert excess oil pressure within the hydraulic system. Excessive oil pressure can cause internal damage to the motor and/or possible shaft seal failure. This update must be incorporated on your skid steer, as Remlinger Mfg. will no longer warrant blown shaft seals or damaged motors. Remlinger will not pay any labor or any other material for adding the Case Drain to your skid steer. Prior to the new 2020 update, Vibrating Screening Bucket hydraulic layouts looked like the ones seen below.

Step 1: Identify the hydraulic set-up on your existing attachment. If you have a bucket with this hydraulic set-up or similar, prior to March 2020 machines, please follow all steps of this bulletin.



Note: If you have another hose set-up, this bulletin still can be used for your attachment. Remove any hoses, fittings and valves. Refer to Step 5 as reference to install the hoses & fittings of the new routing for the VSB system. Some hoses & fittings may be reused.

Step 2: Illustrating the location of attaching the case drain line into your skid steer compartment.



Note: Each skid steer location may be different! Locate the pump & identify if pump has a capped off hydraulic port. Check all sides. If no port found, alternative may be needed.

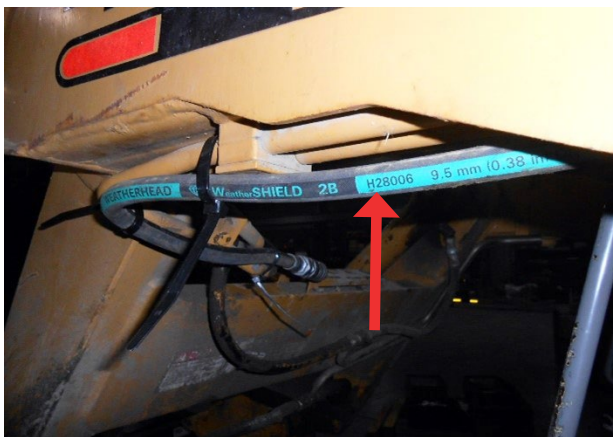
Step 3: Routing the case drain hose through the machine compartment on your skid steer. Route hose along the existing hydraulic pressure and return lines that the machine currently leads to the flat faced hook up connectors.



Note: The fitting to the pump and the hose assembly will not be supplied by Remlinger.

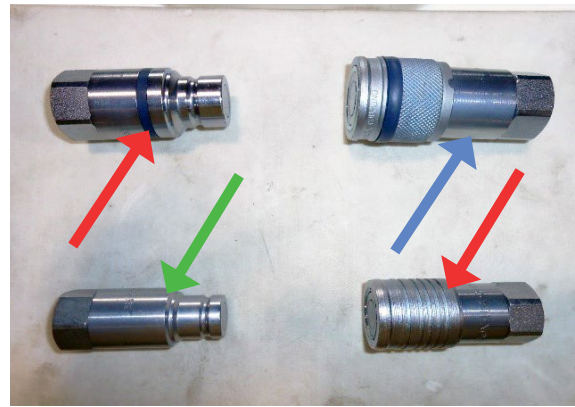
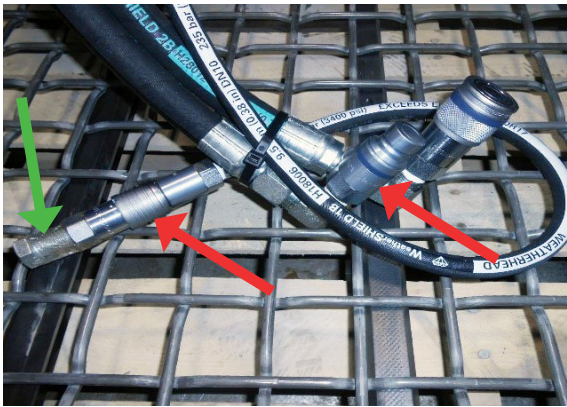


Note: Route hose along the hydraulic pressure and return lines currently on the machine.



Note: Route hose along the boom & tighten securely using zip straps or clamps.

Step 4: Connecting all the hydraulic components together to complete the Update Kit.



Note: Arrow color designated location for Update Kit.

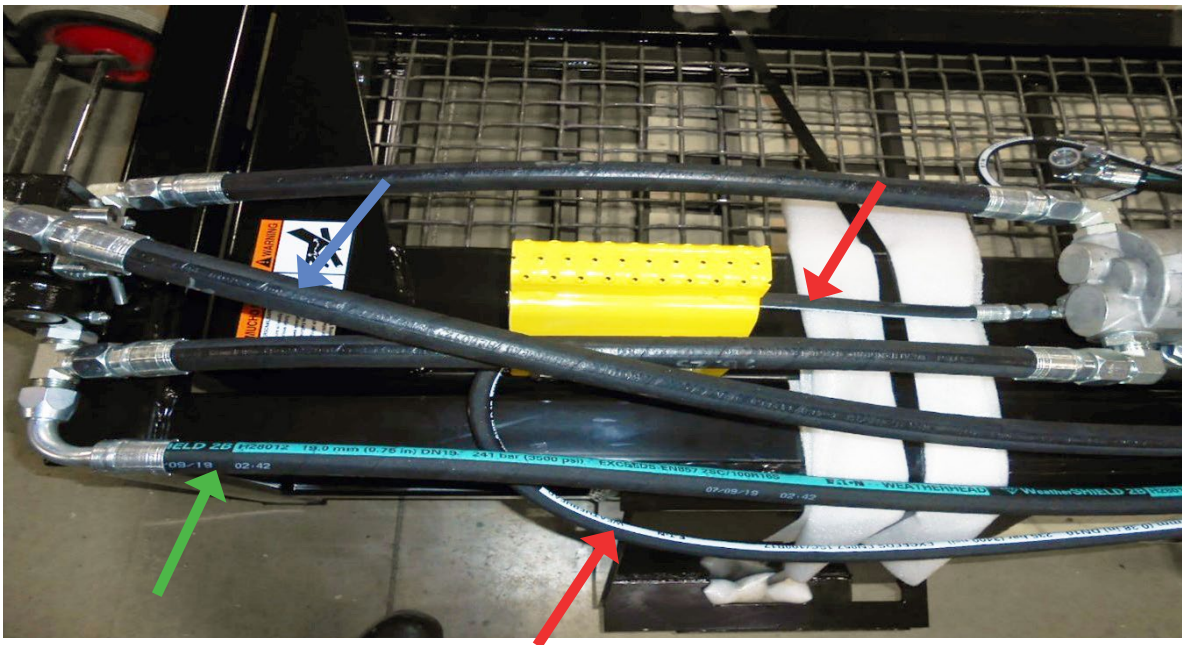


Illustration of Complete Assembled Update Kit

Note: Make sure all fittings and hoses are tight. Double check fittings and hose routing to insure proper functioning of oil flow to and from motor.

Hydraulic Reminder

Pressure Line: Indicated with Blue Arrow

Return Line: Indicated with Green Arrow

Case Drain: Indicated with Red Arrow

Any questions or concerns about this bulletin please contact Technical Support.

technicalsupport@remlingermfg.com

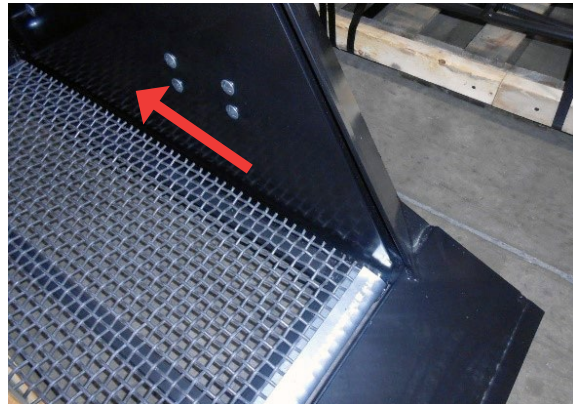
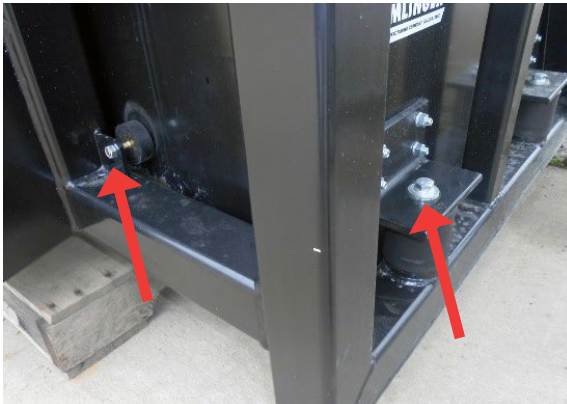
Toll free: 1-800-537-7370

Changing Screens

Step 1: Loosen and/or remove the screen clamp to inside rear of the bucket.



Step 2: Loosen both rubber bumpers on the back rear and all 4 isolators side of the bucket, this allows for hopper to slide back to open gap where hooks lock in.





Step 3: Pry the screen out with pry bar or large screw driver. Remove screen and place different screen in its place



Step 4: Tighten the rubber bumpers on the back rear of bucket and tighten down the bolts on side isolators. Set them to original factory setting. Make sure screen hooks are locked in. Tighten the screen clamp to inside rear of bucket. Make sure all bolt & nut connections are tight.

Recommended Torque Specifications

SAE Grade No.	5		8	
Bolt Head Identification				
Bolt Size	Lb - Ft	N - m	Lb - Ft	N - m
1/4"	9 - 11	12 - 15	12 - 15	16 - 20
5/16"	17 - 20.5	23 - 28	24 - 29	33 - 39
3/8"	35 - 42	48 - 57	45 - 54	61 - 73
7/16"	54 - 64	73 - 87	70 - 84	95 - 114
1/2"	80 - 96	109 - 130	110 - 132	149 - 179
5/8"	150 - 180	203 - 244	220 - 264	298 - 358
3/4"	270 - 324	366 - 439	380 - 456	515 - 618
7/8"	400 - 480	542 - 651	600 - 720	814 - 976
1"	580 - 696	787 - 944	900 - 1080	1220 - 1464
1-1/8"	800 - 880	1085 - 1193	1280 - 1440	1736 - 1953
1-1/4"	1120 - 1240	1519 - 1681	1820 - 2000	2468 - 2712
1-3/8"	1460 - 1680	1980 - 2278	2380 - 2720	3227 - 3688
1-1/2"	1940 - 2200	2631 - 2983	3160 - 3560	4285 - 4827

Troubleshooting

Problem	Possible Cause	Correction
Slow Vibration	Flow set too low	Adjust flow control up to higher oil flow setting
	Incomplete connection	Check connection at skid steer
Fast Vibration	Flow set too high	Adjust flow control down to lower oil flow setting
No Screening Action	Too much material in bucket	Decrease amount of material in bucket
	Material is too wet to screen	Let material dry out
	Screen size too small	Change to larger screen size
Screening too Much	Too little material in bucket	Increase amount of material in bucket
	Screen size too large	Change to smaller screen size
Motor/Seals Leaking	Too much back pressure	Make sure case drain is attached to skid steer
	Too much oil pressure	Change oil pressure from skid steer to help reduce pressure

Registration Form Screening Bucket

Please Return With-in 30 Days of Purchase

Name: _____

Street Address: _____

City: _____ State: _____ Zip: _____

Email: _____

How did you hear about us:

☐ Social Media ☐ Google ☐ Farm Show ☐ Friend ☐ Ad ☐ Dealer

Other: _____

Serial Number: _____ (located on the upper Right-Hand corner of mounting plate)

Dealer Purchased From

Name: _____

Street Address: _____

City: _____ State: _____ Zip: _____

Mail to: Remlinger Manufacturing Company, Inc.
16394 US 224
Kalida, OH 45853

Fax to: 1-419-532-2244

Email to: agsales@remlingermfg.com

Thank you for purchasing Remlinger Equipment!

This Page is Intentionally Left Blank

This Page is Intentionally Left Blank



ISO9001:2015 certified

Remlinger Manufacturing

16394 US 224
PO Box 299
Kalida, OH 45853

Toll Free 1-800-537-7370

Phone (419) 532-3647

Fax (419) 532-2244

technicalsupport@remlingermfg.com

www.remlingermfg.com



Parts Book



Email Tech Support